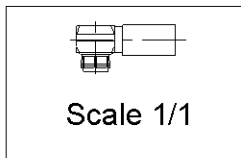
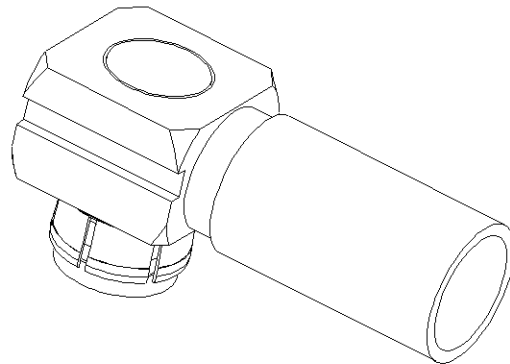
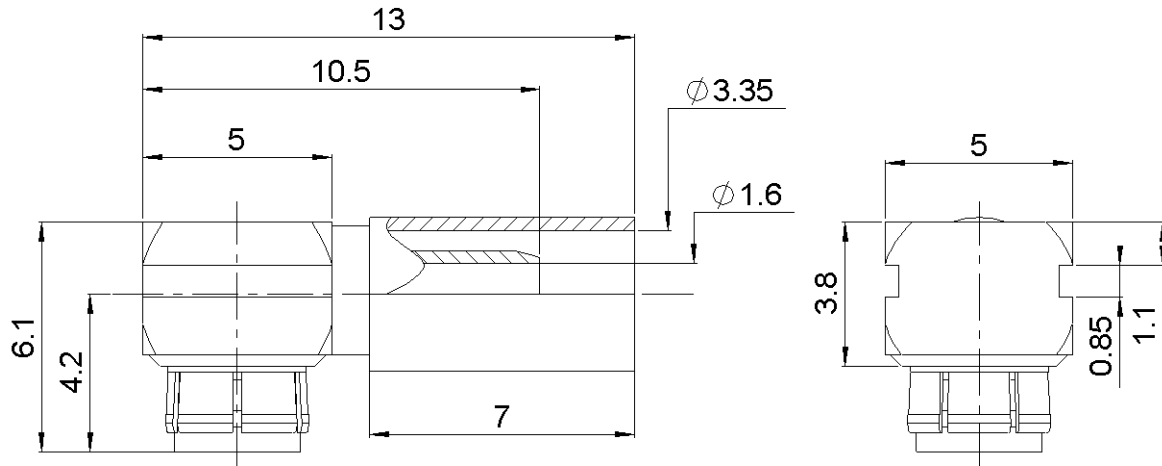


**RIGHT ANGLE PLUG CRIMP TYPE**

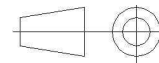
**R223.183.000**

**CABLE 2.6/50 D**

Series : MMBX



All dimensions are in mm.



| COMPONENTS            | MATERIALS               | PLATING (µm) |
|-----------------------|-------------------------|--------------|
| <b>BODY</b>           | <b>BRASS</b>            | <b>NPGR</b>  |
| <b>CENTER CONTACT</b> | <b>BERYLLIUM COPPER</b> | <b>NPGR</b>  |
| <b>OUTER CONTACT</b>  | <b>BERYLLIUM COPPER</b> | <b>NPGR</b>  |
| <b>INSULATOR</b>      | <b>PTFE</b>             |              |
| <b>GASKET</b>         |                         |              |
| <b>OTHERS PARTS</b>   | <b>BRASS</b>            | <b>NPGR</b>  |
| -                     | -                       | -            |
| -                     | -                       | -            |

Issue : 0735 B

In the effort to improve our products, we reserve the right to make changes judged to be necessary.



**RIGHT ANGLE PLUG CRIMP TYPE**

**R223.183.000**

**CABLE 2.6/50 D**

Series : MMBX

**PACKAGING**

| Standard   | Unit              | Other             |
|------------|-------------------|-------------------|
| <b>100</b> | <b>'W' option</b> | <b>Contact us</b> |

**SPECIFICATION**

**ELECTRICAL CHARACTERISTICS**

|                                 |                |                                |
|---------------------------------|----------------|--------------------------------|
| Impedance                       |                | <b>50</b> Ω                    |
| Frequency                       |                | <b>0-12.4</b> GHz              |
| VSWR                            | <b>1.10*</b> + | <b>0,0350</b> x F(GHz) Maxi    |
| Insertion loss                  |                | <b>0.18</b> √F(GHz) dB Maxi    |
| RF leakage                      | - (            | <b>100**</b> - F(GHz)) dB Maxi |
| Voltage rating                  |                | <b>250</b> Veff Maxi           |
| Dielectric withstanding voltage |                | <b>750</b> Veff mini           |
| Insulation resistance           |                | <b>1000</b> MΩ mini            |

**CABLE ASSEMBLY**

| Stripping | a    | b    | c    | d    | e    | f    |
|-----------|------|------|------|------|------|------|
| mm        | 2,00 | 4,50 | 9,50 | 0,00 | 7,50 | 0,00 |

Assembly instruction :

Recommended cable(s)  
K02252D

Characteristics indicated on this data sheet are those that can be achieved with the highest performance cable. Intrinsic limitations of the cable may diminish the performance of the assembly

Cable retention

|            |                   |
|------------|-------------------|
| - pull off | <b>110</b> N mini |
| - torque   | <b>NA</b> N.cm    |

**MECHANICAL CHARACTERISTICS**

|                            |                     |
|----------------------------|---------------------|
| Center contact retention   |                     |
| Axial force – Mating end   | <b>10</b> N mini    |
| Axial force – Opposite end | <b>10</b> N mini    |
| Torque                     | <b>NA</b> N.cm mini |

**TOOLING**

| Part Number  | Description                  | Hexagon |
|--------------|------------------------------|---------|
| .            | .                            | .       |
| R282.235.906 | CRIMPING DIES                | 3.3     |
| R282.293.000 | CRIMPING TOOL<br>M22520/5-01 |         |
| R282.868.000 | EXTRACTION<br>ASSEMBLY TOOL  |         |

|                    |                  |
|--------------------|------------------|
| Recommended torque |                  |
| Mating             | <b>NA</b> N.cm   |
| Panel nut          | <b>NA</b> N.cm   |
| Clamp nut          | <b>NA</b> N.cm   |
| A/F clamp nut      | <b>0,0000</b> mm |

|             |                        |
|-------------|------------------------|
| Mating life | <b>100</b> Cycles mini |
| Weight      | <b>1,0000</b> g        |

**OTHER CHARACTERISTICS**

\* to 6 GHz

\*\* Interface MMBX only up to 2.5 GHz

**ENVIRONMENTAL**

|                       |                     |
|-----------------------|---------------------|
| Operating temperature | <b>-55/+155</b> °C  |
| Hermetic seal         | <b>NA</b> Atm.cm3/s |
| Panel leakage         | <b>NA</b>           |

Issue : 0735 B

In the effort to improve our products, we reserve the right to make changes judged to be necessary.



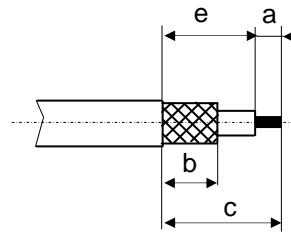
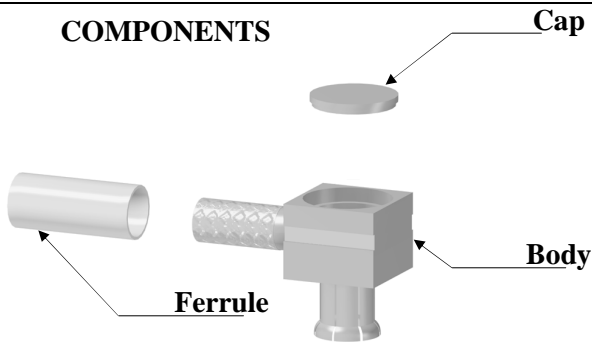
**RIGHT ANGLE PLUG CRIMP TYPE**

**R223.183.000**

**CABLE 2.6/50 D**

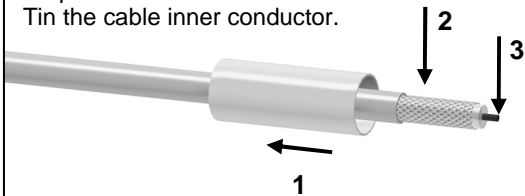
Series : MMBX

**COMPONENTS**



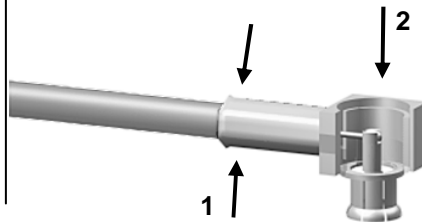
**1**

Slide the ferrule onto the cable.  
Strip the cable.  
Tin the cable inner conductor.



**4**

Crimp the ferrule with crimping tool ( see connector TDS ).  
Solder the inner conductor.



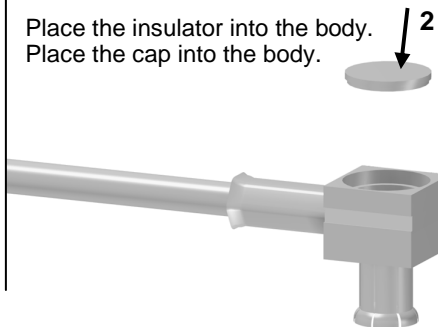
**2**

Fan the braid.



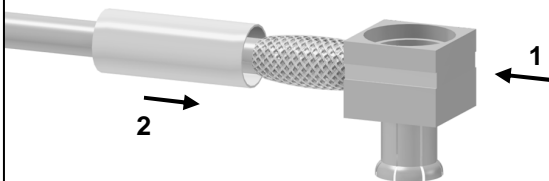
**5**

Place the insulator into the body.  
Place the cap into the body.



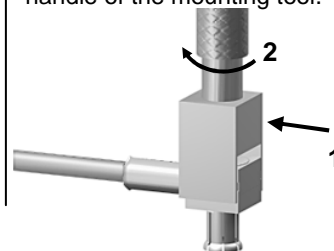
**3**

Push the connector body under the braid.  
Slide the ferrule over the braid.



**6**

Slide mounting tool R282.868.000 onto the body grooves.  
Drive the cap into rear opening of body by rotating the handle of the mounting tool.



Issue : 0735 B

In the effort to improve our products, we reserve the right to make changes judged to be necessary.

